

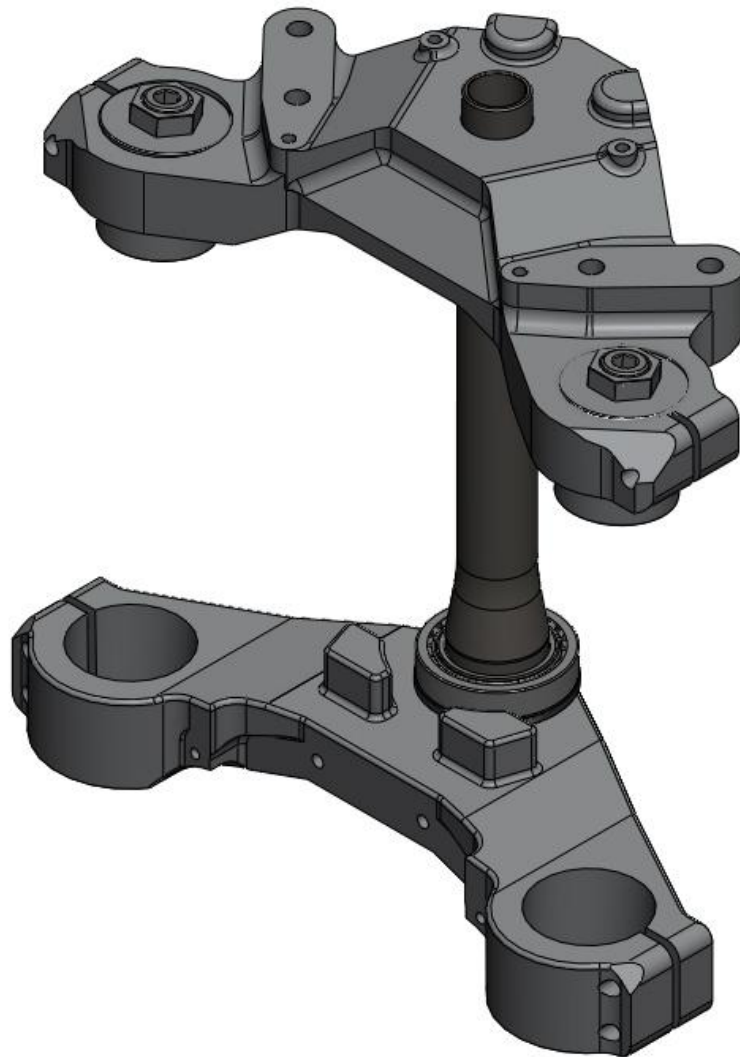
# Champion Sidecars

## EZ-Steer Installation Guide

For

### Honda – GL1800 Motorcycles

Revision 4

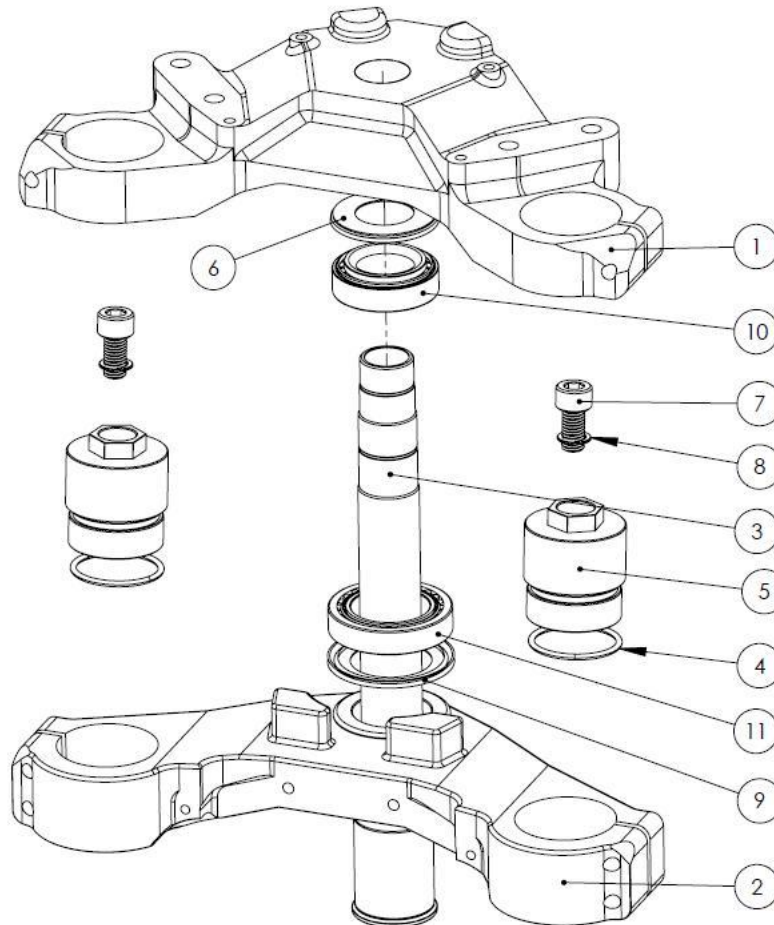


Champion Motorcycle Accessories International, Inc.  
Dba Champion Sidecars  
11841 Monarch Street, CA 92841  
(800) 875-0949 (714) 847-0949 Fax (714) 847-1539  
[www.championtrikes.com](http://www.championtrikes.com)

## EZ-Steer for Honda – GL1800 Motorcycles

### Parts Illustration

NO.	DESCRIPTION	ITEM NO.	QTY.
1	TOP TRIPLE CLAMP, GL1800	EZ-I00-001	1
2	BOTTOM TRIPLE CLAMP, GL1800	EZ-I00-002	1
3	STEERING STEM, GL1800	EZ-I00-003	1
4	O-RING, AS568A-127, FORK EXTENSION, GL8	EZ-I00-004	2
5	FORK EXTENSION, GL1800	EZ-I00-005	2
6	SEAL, BEARING, TOP, SMALL, GL8	BE-E00-008	1
7	M10x1.5x20mm SHCS	HW-M10-023	2
8	WASHER, CRUSH, BRAKE, STD. M10	BR-G00-004	2
9	SEAL, BEARING, BOTTOM, GL8	BE-E00-018	1
10	BEARING, STEM, TOP, SMALL, EZ5/EZ8 (32005xR/26)	BE-HI0-001	1
11	BEARING, BOTTOM, 35/55/14, 32907, GL8EZ	BE-E00-017	1



## GL1800 EZ Steer Installation Instructions

**\*\*\*WARNING: The Champion EZ-Steer Kit is designed to be used only with sidecar and trike applications.\*\*\***

Installation of the Champion EZ-Steer system is similar to the installation of the OEM clamp of your Honda GL1800 Motorcycle. We recommend that you use an OEM service manual in conjunction with this installation instruction set. Use factory torque values unless specified in this installation set.

### Mandatory Parts/Tools Needed:

- Lock Washer (Honda Part # 90506-425-830)
- Steering Stem Socket Tool (Honda Part # 07916-3710101 or 07916-3710100)

### Recommended Replacement Parts Needed:

- Adjustment Nut (Honda Part # 53220-MWO-000)
- Lock Nut (Honda Part # 90302-425-830)
- Stem Nut (Honda Part # 90304-MJ4-670)

1. Use the Parts Checklist included with your kit to verify the contents of the box.
2. Remove the OEM Top Bridge (Top Clamp) and Bottom Bridge (Bottom Clamp) with steering stem as per the Honda Service Manual.
3. Replace both the top and bottom steering bearing races with the new supplied races. Refer to the Honda Service Manual.
4. Completely pack the new top bearing with the supplied grease. Check the bottom bearing to ensure sufficient grease. It is the installer's responsibility to ensure sufficient grease is installed in the bearings.
5. Install the Champion stem with bottom clamp into neck.
6. While holding the stem, install the supplied top bearing and dust seal.
7. Install the adjustment nut and torque to 30 ft-lbs using the Honda steering stem socket tool. Loosen the adjustment nut and retighten to the same torque. Turn steering stem left and right, lock to lock a few times to fully seat the bearings. Retighten the adjustment nut to the same torque of 30 ft-lbs.
8. Install the new lock washer onto the adjustment nut with the tabs aligned in the grooves.
9. Install the lock nut and finger tighten it until seated on lock washer. Further tighten the lock nut to align its grooves with the tabs of the lock washer. Do not over tighten the lock nut; this will flatten the lock washer. Bend the lock washer tabs up into the grooves of the lock nut.
10. Install the Champion top clamp. Install stem nut finger tight (Note: to be tightened later in the installation).
11. Install the Champion fork extensions with o-rings onto both fork legs and torque to 16 ft-lbs. Torque the oil fill bolts on top of the fork extensions to 35 ft-lbs.
12. Temporarily install the fork legs into the bottom and top clamp with the top surface of the fork extensions flush with top surface of the top fork clamp as per the illustration on the cover of this installation instruction set. Tighten the stem nut to 76 ft-lbs.
13. Make sure the steering stem moves smoothly, without play or binding, by turning right to left multiple times.
14. Install the fork legs properly and finish front end assembly according to the Honda Service Manual. (Note: The top fork clamp pinch bolts should be torqued to 19 ft-lbs. The bottom fork clamp pinch bolts should be torqued to 21 ft-lbs.)

## EZ-Steer Maintenance

The bearings in your EZ-Steer kit are normal wear items, not subject to replacement under Champion's one year Limited Warranty for the product. Failure to follow your motorcycle manufacturer's recommendations for periodic OEM triple-tree maintenance will accelerate the wear on these bearings. Checking/adjustment of the steering stem nut torque with the front end lifted, in accordance with your motorcycle manufacturer's recommendations, is important to reliable bearing service.

**\*\*\*PARTS AND SPECIFICATIONS SUBJECT TO CHANGE WITHOUT NOTICE\*\*\***