

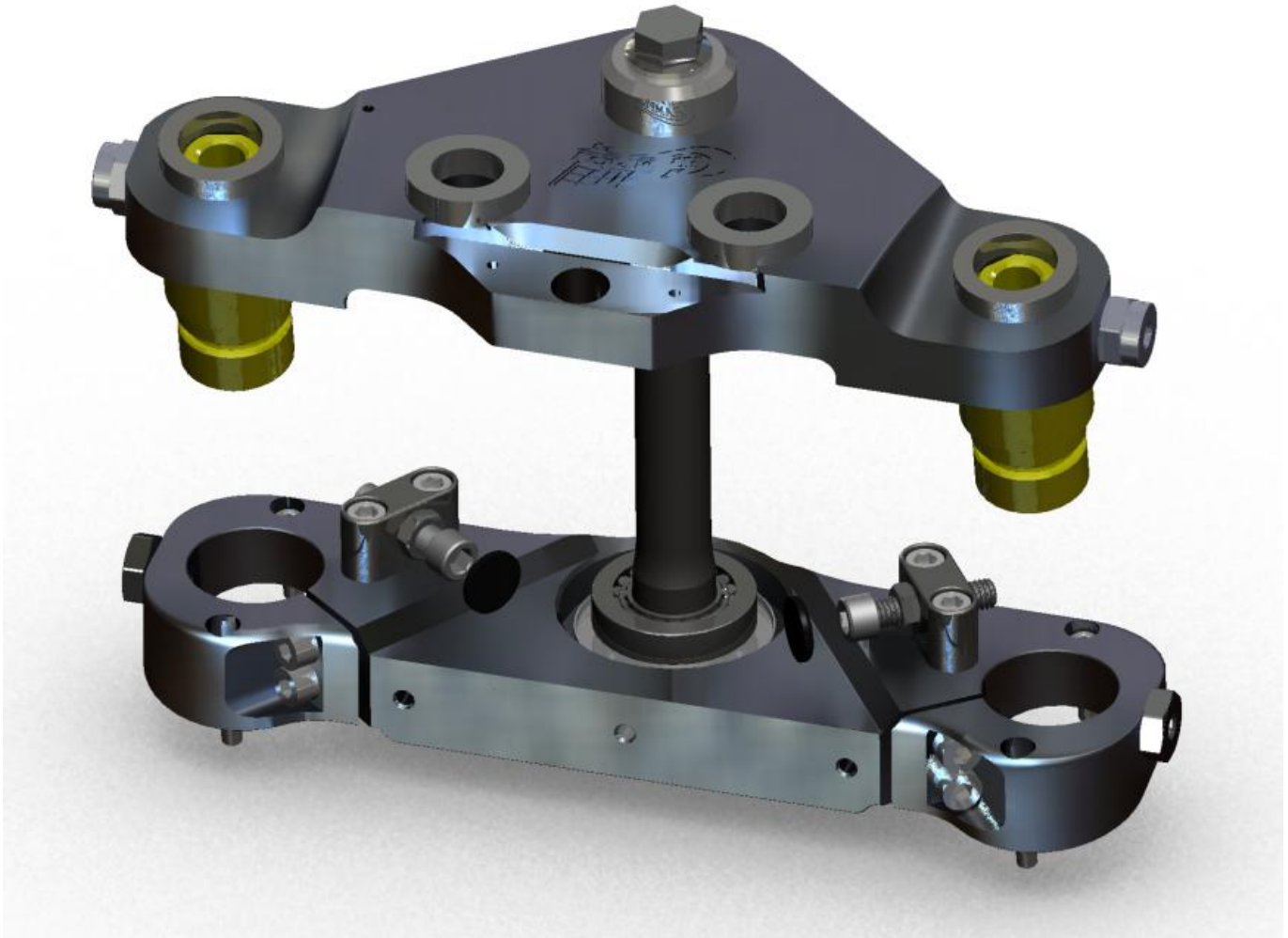
Champion Sidecars

EZ-Steer Installation Guide

For

Harley Davidson FLH Motorcycles

Revision 12

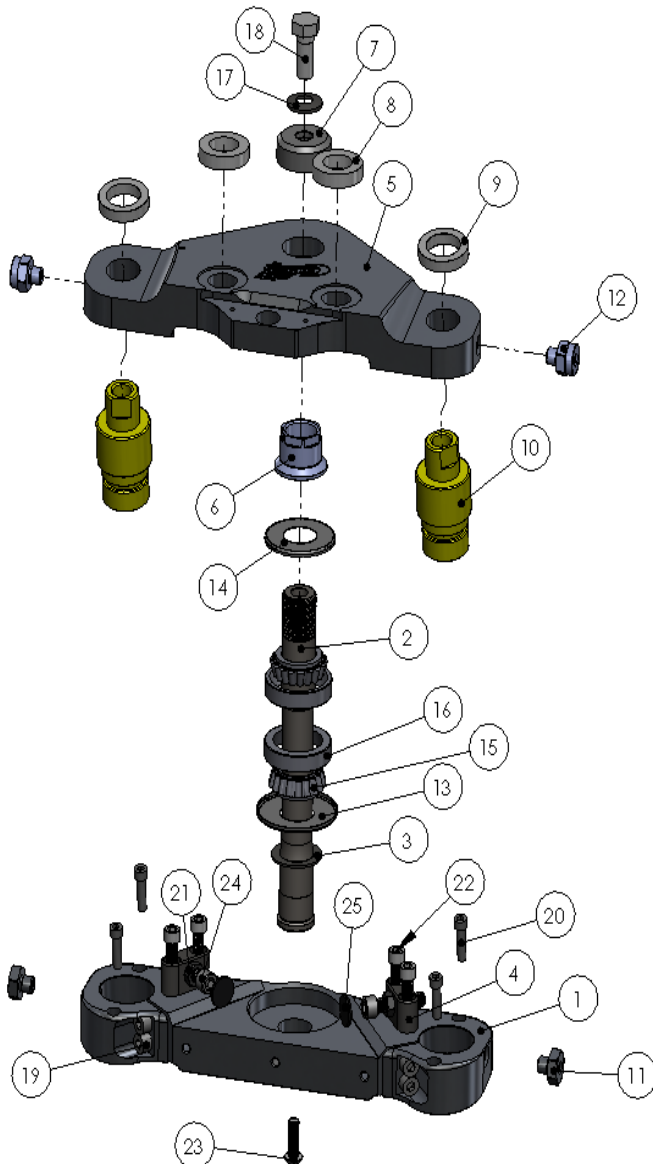


Champion Motorcycle Accessories International, Inc.
Dba Champion Sidecars
11841 Monarch Street, CA 92841
(800) 875-0949 (714) 847-0949 Fax (714) 847-1539
www.championtrikes.com

**Note: 1992 and down FLH models will no longer have operable steering locks after installing EZ Steer.
Harley Davidson Tri-Glide: To install FLH EZ Steer purchase H.D. outer fairing skirt #58208-96A.**

EZ-Steer for Harley Davidson FLH Motorcycles

Parts Illustration



ITEM NO.	DESCRIPTION	ITEM NO.	QTY.
1	CLAMP BOTTOM FLH	EZ-Q00-002	1
2	STEM STEERING	EZ-Q00-003	1
3	STEEL SHIM	EZ-Q00-019	1
4	BLOCK STOP	EZ-Q00-020	2
5	UPPER TRIPLE CLAMP	EZ-Q00-001	1
6	STEM LOCK NUT	EZ-Q00-010	1
7	STEM STEP WASHER	EZ-Q00-011	1
8	HANDLE BAR MOUNT SPACER	EZ-Q00-014	2
9	FORK EXTENSION SPACER	EZ-Q00-016	2
10	SPACER, FORK EXTENSION	EZ-Q00-007	2
11	FAIRING BOSS SHORT	EZ-Q00-018	2
12	FAIRING BOSS LONG	EZ-Q00-017	2
13	DUST SHIELD, 2.1" OD	EZ-Q00-005 4	1
14	DUST SHIELD, 2.4" OD	EZ-Q00-005	1
15	BEARING, INNER RACE (L44643)	BE-G00-002	2
16	BEARING, OUTER RACE (L44610)	BE-G00-001	2
17	1/2" SERRATED BELLEVILLE WASHER	EZ-Q00-013	1
18	1/2-20x1-1/4 HHCS GR8	HW-500-037	1
19	M8x1.25x30 SHCS	HW-M08-022	4
20	1/4-28 x 1.00 SHCS	HW-250-024	4
21	3/8 - 16 HEX JAM NUT	HW-378-088	2
22	5/16-18 x 1" SHCS AISI 304	HW-312-020	4
23	5/16-24 x 1" BHCS SS	HW-312-048	1
24	3/8 - 16 x 1.25" SHCS	HW-375-087	2
25	Bumper, Adhesive Backed, EZF	EZ-Q00-021	2

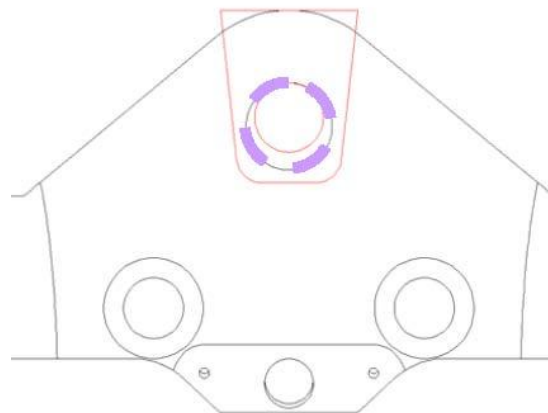
WARNING: IF THIS EZ STEER KIT IS INSTALLED ON A MOTORCYCLE WITH A SIDECAR AND SIDECAR IS REMOVED, THE MOTORCYCLE IS **NOT SAFE TO RIDE.**

FLH EZ Steer Instruction Supplement

Installation of the Champion EZ-Steer system is similar to the installation of the OEM triple clamp of your Harley Davidson FLH Motorcycle. We recommend that you use an OEM service manual and follow the prescribed disassembly, installation and torque specifications for the upper and lower clamp assembly.

Before Installing Kit (2008 & Prior)

The wiring bracket of the OEM upper triple clamp needs to be modified to fit the Champion upper triple clamp. After removing / disassembling the OEM parts from your motorcycle, position the OEM wiring bracket onto the Champion upper clamp as shown. Scribe the ID of the steering stem hole onto the wiring bracket and enlarge the hole to scribe line. This will allow the wiring bracket to fit over the new Stem Lock-Nut. Install OEM handle bar mount assemblies to Champion upper clamp using Item #5 (Handle Bar Mount Spacer). The spacers are used on top of the upper clamp.



Installation Notes

- **Be sure to use the correct fork extension. Yellow 2002 and newer (non adjustable air pressure). Black for 2001 and older (adjustable air pressure). Be sure to double check the fork cap (Fork Tube Plug) being removed.**
- Reinstall the OEM O-rings on Item #7 (Fork Extensions) prior to installing in the fork tubes.
- On some of the Road King models with chrome headlight Nacelle, Item #9 must be mounted underneath upper clamp Item #2 to ensure enough room for air fittings.
- Be sure to replace fork covers in proper order, during installation of the fork tubes.
- Thoroughly clean sides of steering neck and install self adhering rubber stops where steering stop screws contact frame.
- Secure wires and cables clear of steering stop bolts.
- Do not torque Item # 1 (½-20 x 1-1/4" Hex Head Bolt) until fork tubes have been installed to assembly.
- Note the torque specification for the items listed in the table below.

Item #	Part Description	Torque Spec (Lb. Ft.)
1	½-20 x 1-1/4" Hex Head Bolt	50
8	Stem Lock Nut	35
15	M8 x 1.25 x 30 Socket Head Cap Screw (x4)	25

Fixed Fairing Models (Road Glide)

- To use the Champion EZ-Steer, the fairing will need to be modified.
- Located at the bottom of the fairing's center, the inner fairing will need to be cut by ½", which is shown in Figure 1.
- Rotate the front suspension. Mark the outer fairing where the fork tube cans hit.
- Cut a relief so the cans do not hit the outer fairing. Adjusting both 3/8-16x1.25" SHCS (item number 24) as necessary. See Figure 2 for an example.

Note: Verify that the lock will work after adjustment have been made

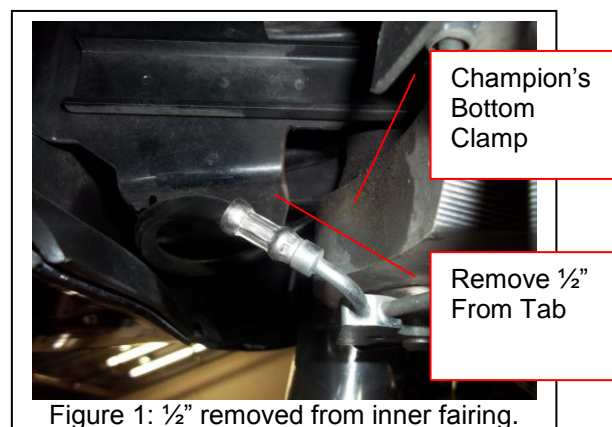


Figure 1: ½" removed from inner fairing.



Figure 2: Relief for the fork tube cans.

EZ-Steer Maintenance

The bearings in your EZ-Steer rake kit are normal wear items, not subject to replacement under Champion's one year Limited Warranty for the product. Failure to follow your motorcycle manufacturer's recommendations for periodic OEM triple-tree maintenance will accelerate the wear on these bearings. Checking/adjustment of the steering stem nut torque with the front end lifted, in accordance with your motorcycle manufacturer's recommendations, is important to reliable bearing service.