

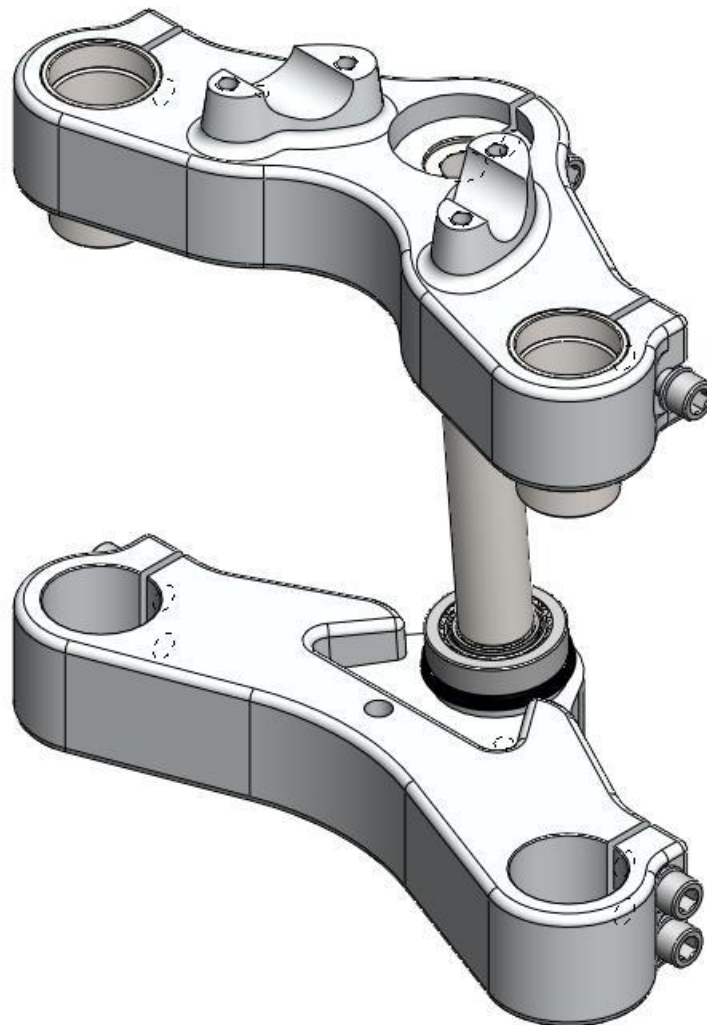
Champion Sidecars

EZ-Steer Installation Guide

For

Harley Davidson 2010-Up Sportster Forty-Eight Motorcycles

Rev. Date 9/20/2011

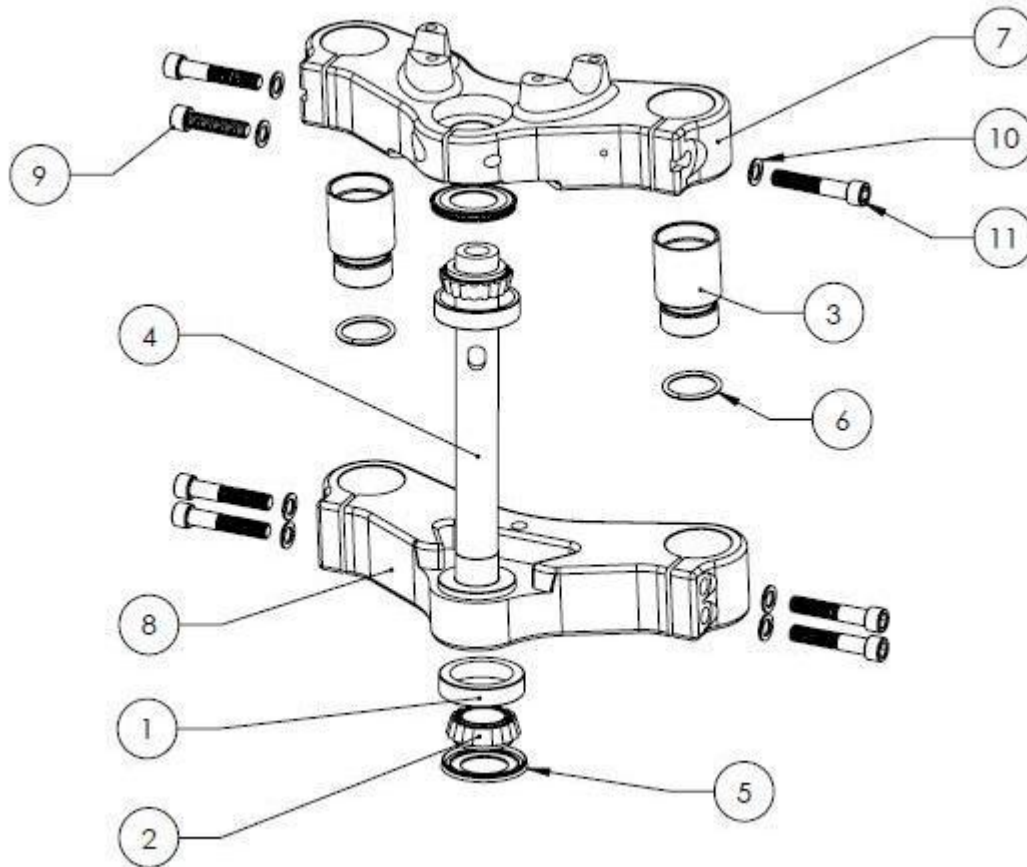


Champion Motorcycle Accessories International, Inc.
Dba Champion Sidecars
11841 Monarch Street, CA 92841
(800) 875-0949 (714) 847-0949 Fax (714) 847-1539
www.championtrikes.com

EZ-Steer for Harley Davidson 2010-Up Sportster Forty-Eight Motorcycles

Parts Illustration

ITEM NO.	DESCRIPTION	ITEM NO.	QTY.
1	BEARING, OUTER RACE (L44610)	BE-G00-001	2
2	BEARING, INNER RACE (L44643)	EE-G00-002	2
3	FORK EXTENSION, SPORTSTER, EZ STEER	EZ-S00-003	2
4	STEERING STEM SHAFT, SPORTSTER, EZ STEER	EZ-S00-004	1
5	SEAL, STEERING STEM, TOP & BOTTOM, SP	EZ-S00-005	2
6	O RING, FORK EXTENSION, NO. 216, SPORTSTER	EZ-S00-006	2
7	UPPER TRIPLE CLAMP, SPORTSTER 48, EZ STEER	EZ-S00-010	1
8	LOWER TRIPLE CLAMP, SPORTSTER 48, EZ STEER	EZ-S00-011	1
9	3/8 - 16 X 1.5" SHCS CLEAR ZINC	HW-375-097	1
10	3/8 ID 5/8 OD SS WASHER	HW-390-002	7
11	0.375_16_2.0_SHCS_CLEAR ZINC	HW-375-037	6



Sportster Forty-Eight EZ Steer Instructions

*****WARNING: The Champion EZ-Steer Kit is designed to be used only with sidecar and trike applications.*****

Installation of the Champion EZ-Steer system is similar to the installation of the OEM triple clamp of your Harley Davidson Sportster Motorcycle. We recommend that you use an OEM service manual and follow the prescribed disassembly, installation and torque specifications for the upper and lower clamp assembly.

Installation Notes

- Remove front fender, wheel, brake caliper, and fork tubes.
- Remove all components attached to stock triple clamps, then the triple clamps themselves.
- Remove upper and lower bearings including race.
- Install new steering stem bearing races into neck.
- Install new upper steering stem bearing with seal into neck.
- Install Top and Bottom triple clamps into neck and snug steering stem bolt with washer.
- Remove fork tube cap from both forks.
- Install fork extensions with o-ring into fork tubes and tighten until fully seated.
- Install fork tube caps with o-rings and tighten (see table).
- Slide fork tubes into triple clamps until the top of each tube cap extends 0.42-0.50" above top surface of upper triple clamp.
- Tighten 3/8-16 x 2" shcs pinch bolts on upper triple clamp (see Item 10).
- Tighten OEM steering stem bolt (see table).
- Tighten 3/8-16 x 2" shcs pinch bolts on lower triple clamp (see Item 10).
- Tighten 3/8-16 x 1.5" shcs pinch bolt on upper triple clamp (see Item 9).
- Install front wheel assembly and front brake caliper.
- Install front fender.

Item #	Part Description	Torque Spec (Lb. Ft.)
-	Fork Tube Cap	22-58
-	Bolt, Steering Stem, SP (OEM)	30-35
10	3/8 - 16 X 2" Socket Head Cap Screw	30-35
9	3/8 - 16 X 1.5" Socket Head Cap Screw	30-35

EZ-Steer Maintenance

The bearings in your EZ-Steer kit are normal wear items, not subject to replacement under Champion's one year Limited Warranty for the product. Failure to follow your motorcycle manufacturer's recommendations for periodic OEM triple-tree maintenance will accelerate the wear on these bearings. Checking/adjustment of the steering stem nut torque with the front end lifted, in accordance with your motorcycle manufacturer's recommendations, is important to reliable bearing service.

Windshield Notes

Please note that this EZ-Steer kit accommodates all known windshield types; for example: H.D. Part # 57682-10 and 58053-10.